

Unleash your creativity with cloud platform



myTikee Storytelling is our cloud platform subscription plan dedicated for the next-generation of deliverables leveraging the full power of Enlaps' artificial Intelligence algorithms.

Hosting up to 100 000 images, you can generate automatically 4K-6K high quality immersive contents and impressive visual effects while benefiting from advanced monitoring options to manage your own fleet of cameras.

myTikee Storytelling features



Subscription period

myTikee Storytelling subscription is available for 3, 6 or 12 months.



Portfolio mode

Organize and group the different points of view that your Tikee timelapse camera captured into a single portfolio.



Smart filtering

Our professional timelapse software allows you to select your photos in a snap with our Artificial Intelligence filters: good weather, snow, good visibility, or even a beautiful sky.



Mask blurring

Selection of the areas to be hidden on the timelapse videos in accordance to GDPR



Monitoring

Optimize the management of all of your Tikee timelapse cameras at a glance and control them instantly thanks to the Always On mode*.

**only on Tikee 3 PRO with option enabled*



Advanced content sharing

Choose between many video and photo sharing options via private links and fully customizable iframes.



6K photo resolution

Merge your 4K / 6K images for unparalleled video and photo editing possibilities.



Navigation between points of view

Take advantage of the geolocation of your innovative timelapse cameras to navigate between your different points of view on a virtual map.



Viewsfeed

Enrich your story every day with optimized content selected and automatically created by our AI-powered timelapse software myTikee PRO Storytelling



Timelapse builder

Generate professional timelapse videos in one click using our exceptional photo-editing software. It features advanced image processing, as well as algorithms for selecting the best image



Image transfer to FTP server

Automatic transfer of images to the FTP server of your choice.

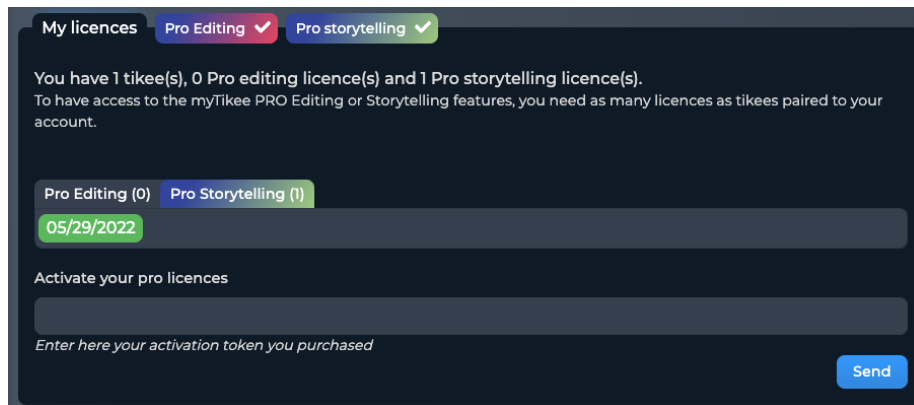
Activate your myTikee subscription

1 - Create or connect to your account on my.tikee.io

2 - Click on the **My profile**  section

3 - Enter your activation token in the “**Activate your licences**” section.

You will find your token on the back of the card purchased to one of Enlaps retailers or on your personal account on enlaps.io.



4 - Click on **Send**. Once the token is validated, you will see the expiration date of your license(s) in the Storytelling Licence box.

If you have a smartphone or tablet, you can scan the QR Code on the card that contains the activation token, this will save you from copying the token.

Manage your myTikee subscriptions

One purchased license is required per camera connected to the myTikee account.

For the myTikee Storytelling features to be activated, you need to have as many licenses as cameras connected to your account. It is not possible to mix Editing and Storytelling licenses on the same myTikee account.

You can check the status of your licenses on **My profile**  on myTikee.

Tikee dashboard

NORMAL

Power mode

Indicates the operating status of your Tikee



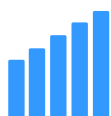
Last connection

Indicates the date of the last connection of the Tikee



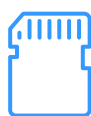
Last image received

Indicates the date of the last image received



Telecom

Indicates the network throughput (calculation based on the time it takes to upload images)



SD card

Indicates the available storage space



Battery

indicates the percentage of battery left

Name	Serial number	Mode	Last connection	Last image upload	Network	SD free space	Firmware version	Battery	
MOUCHEROTTE	T-P2P-2H-602254		01/27/2022 05:53 PM	01/27/2022 07:52 PM	1.3 MB/s	110 GB	3.1.0	100%	Check all details
CROZET	T-P2P-2H-603347E	NORMAL	01/28/2022 01:41 PM	01/28/2022 01:53 PM	912 KB/s	59 GB	3.3.0	100%	Check all details
REFUGE VALLOT	T-P2P-2H-603661	NORMAL	01/28/2022 01:14 PM	01/28/2022 01:29 PM	953 KB/s	116 GB	4.0.6	68%	Check all details
REFUGE NID D'AIGLE	T-P2P-2H-603749	NORMAL	01/28/2022 11:30 AM	01/28/2022 11:43 AM	427 KB/s	116 GB	4.0.5	100%	Check all details
	T-PRO-3L-A01175								Check all details

Important: this information indicates the status of the Tikee at the time of its last connection and is updated the next time the Tikee is connected.kee.

Sequence creation from myTikee cloud platform



You can create a new sequence from the myTikee cloud platform if the camera is in the active shooting state

For a first sequence, it is preferable to create the sequences with the Tikee Remote mobile application.



Edit your recording from myTikee cloud platform

Once your long-term timelapse sequence has been set up and launched, you can edit the following elements remotely, from the myTikee web application :



The shooting time slot



The interval between shots



The end date of the shooting



Recording rules on the SD card



The days of the week when shooting is activated



Sequence creation and deletion

Long Sequence Crozet4

Period from 05 : 00 to 21 : 00

Images format: Jpg Raw

Start: 23 July 2020

End: 23 July 2020

Interval: 30 min

Active days: M T W T F S S

Upload images: Yes No

Store on Tikee: Yes No

Resolution of images sent: S M L

Name: Crozet4

Description:

These modifications will be taken into account at the next connection of the Tikee camera to the myTikee web application (during the next photo upload).

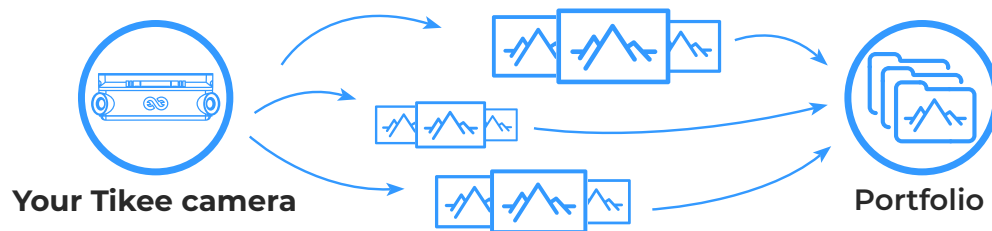
View your content on myTikee

The images are uploaded by the Tikee at defined intervals. With each upload, the Tikee will log in, and send its information and available photos. The information and photos that you can see for your project are those that the Tikee uploaded the last time it connected. A timelapse video will be automatically generated and updated after each new photo upload.

Please note that this upload interval can be modified and has an impact on the battery life of the device.

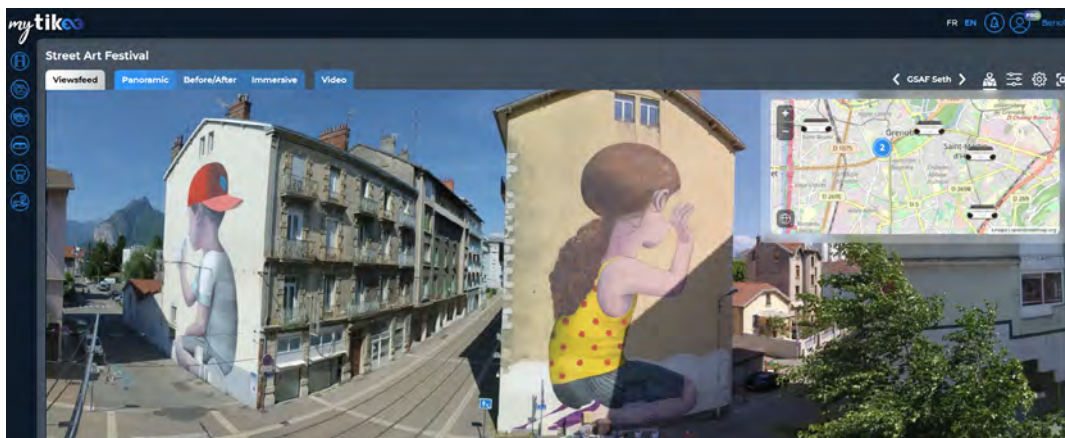
Portfolio mode

Organize and group the different points of view that your Tikee timelapse camera captured into a single portfolio.



Navigation between points of view

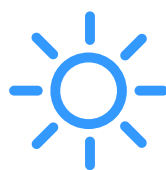
Take advantage of the geolocation of your innovative timelapse cameras to navigate between your different points of view on a virtual map.



Smart Filtering

Our Artificial Intelligence filters help you find the best moments in your timelapse.. These filters are designed to make your timelapse creation easier.

All you have to do is select the right filter, depending on weather conditions or other factors.



**Filter
Good
weather**



**Filter
Snow**



**Filter
Good
visibility**

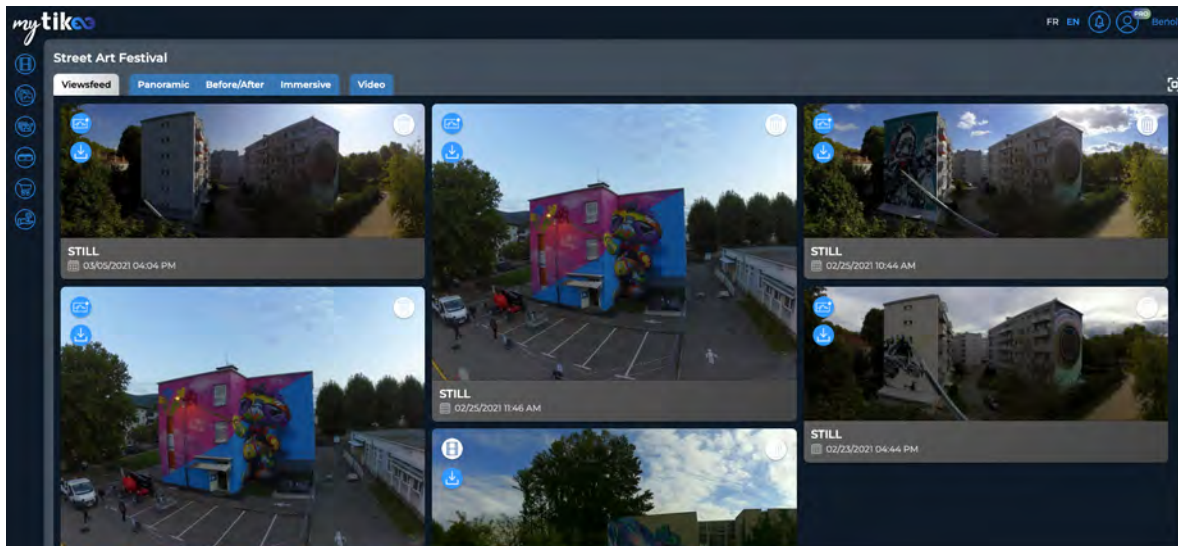


**Filter
Beautiful
sky**

Viewsfeed

myTikee Storytelling features a revolutionary AI-powered algorithm, which intelligently analyzes thousands of timelapse videos to create amazing content for your story. It will optimize all your photos and videos by using the best frames, filters, and keywords.

Thanks to this optimization, find the best content every day in the viewsfeed, so you can share it easily.



Timelapse builder

From the myTikee cloud platform, the Timelapse Builder allows you to create a professional-quality timelapse in just a few steps using advanced image processing and photo selection algorithms specifically developed by Enlaps.

The generation takes a few minutes (one hour maximum). A download link is sent by email as soon as the video is available. You can also share your timelapse video directly from your Exports on the left menu on myTikee.

With the myTikee Storytelling subscription, you will have access to the most advanced features of the Timelapse builder:



Smart Image Selection



Stabilization



Spherical Pan & Zoom



Scene Lighting Optimization




Custom Watermark



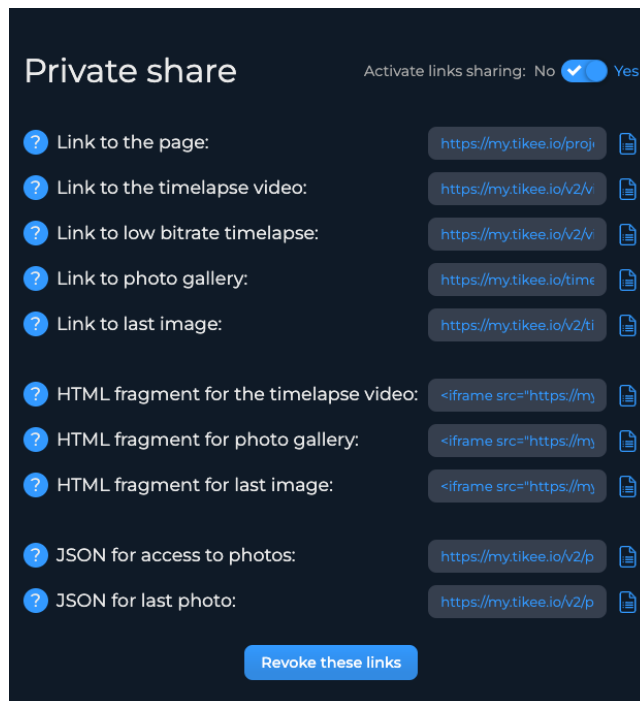
Date Overlay

The Timelapse Builder is only available with myTikee Editing, myTikee Storytelling or myTikee Storytelling + RGD subscriptions.

Sharing features on myTikee

By clicking on the thumbnail of your project, you will find a  **Share** button below the displayed image. It gives you the different sharing links :

- Direct sharing of the preview page
- Direct sharing of the gallery or timelapse videos only
- Iframe integration for an existing web page
- query URL (link to JSON data) for custom integration



Please note that these features are only available for active myTikee Editing and Storytelling subscriptions.

Support

In case you lose your card or have any questions about the myTikee cloud platform, please visit our Help: support center on our website help.enlaps.io/en/ or contact us using our contact form on our website enlaps.io/en/contact/